



FOUQUETTE
Commercial Real Estate Services



www.fouquette.com

8737 VENICE BOULEVARD – LOS ANGELES, CA 90034



FOR LEASE

- Turn-key Offices – 2,500 S.F. (or 2,675 to 3,075 s.f.)
- Full Service Gross Rate: \$2.00/s.f./mo. (utilities & janitorial included)
- Free parking for 5 to 6 on-site plus great street parking
- 24/7/365 building access
- Phone System, Furnished offices, Kitchen & Conference Room
- Very efficient & well designed layout

- Across the Street from the Newly Revitalized Helms Bakery Promenade
- Enjoy famous local restaurants: Father's Office, La Dijonaise, Beacon & Wilson's
- Downtown Culver City restaurants & shops are just down the street.
- Nicely manicured landscaping
- Immediate access to the 10-FWY at Robertson & La Cienega Boulevards
- 7 miles to Downtown L.A. , Beverly Hills, Santa Monica, Hollywood & LAX.



Contact:

FLOYD FOUQUETTE
DRE Lic. 01092388
floyd@fouquette.com

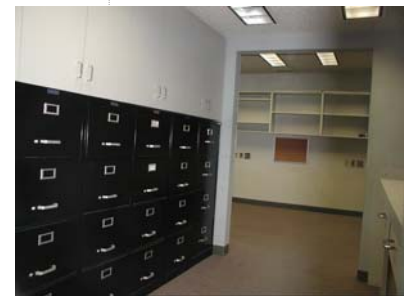
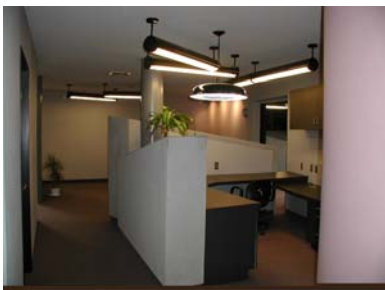
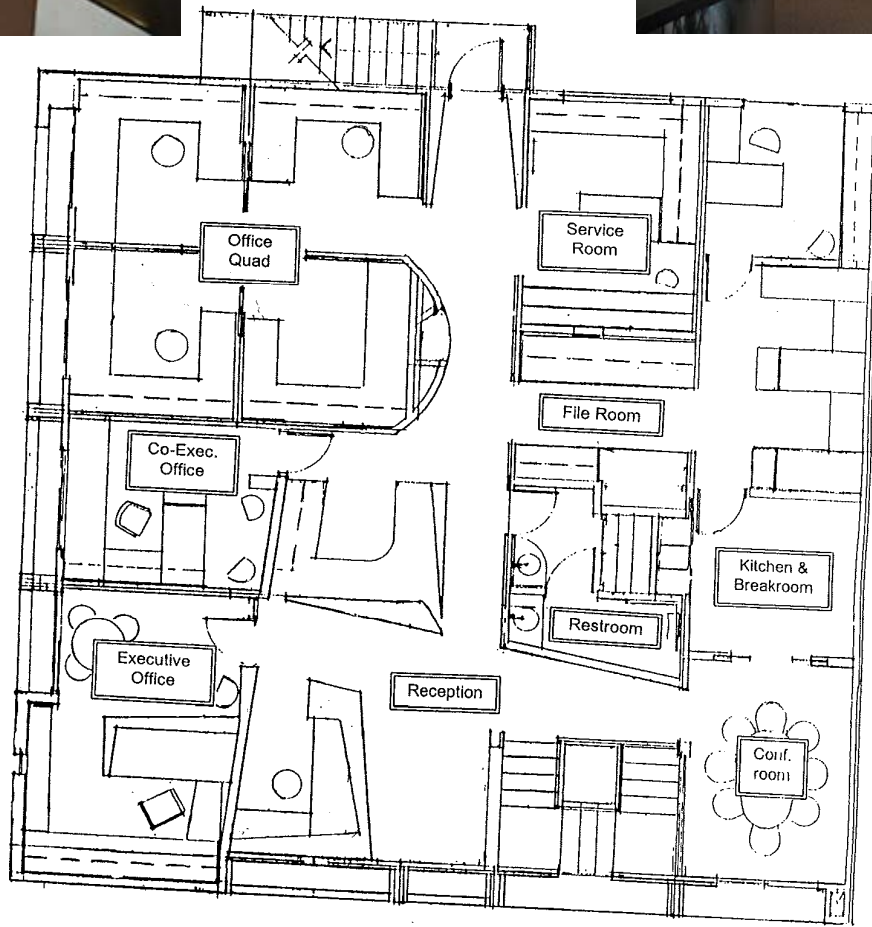
The information contained herein is given in confidence with the understanding that all negotiations pertaining to this property shall be handled through Fouquette Commercial Real Estate Services. This information has been furnished from sources which we deem reliable and for which we assume no liability. All measurements are approximate.



FOUQUETTE
Commercial Real Estate Services



www.fouquette.com



8737 Venice Boulevard, 2nd FL. Los Angeles, CA 90034 Phone: 310/202-1280
Fax: 310/202-1284 www.fouquette.com